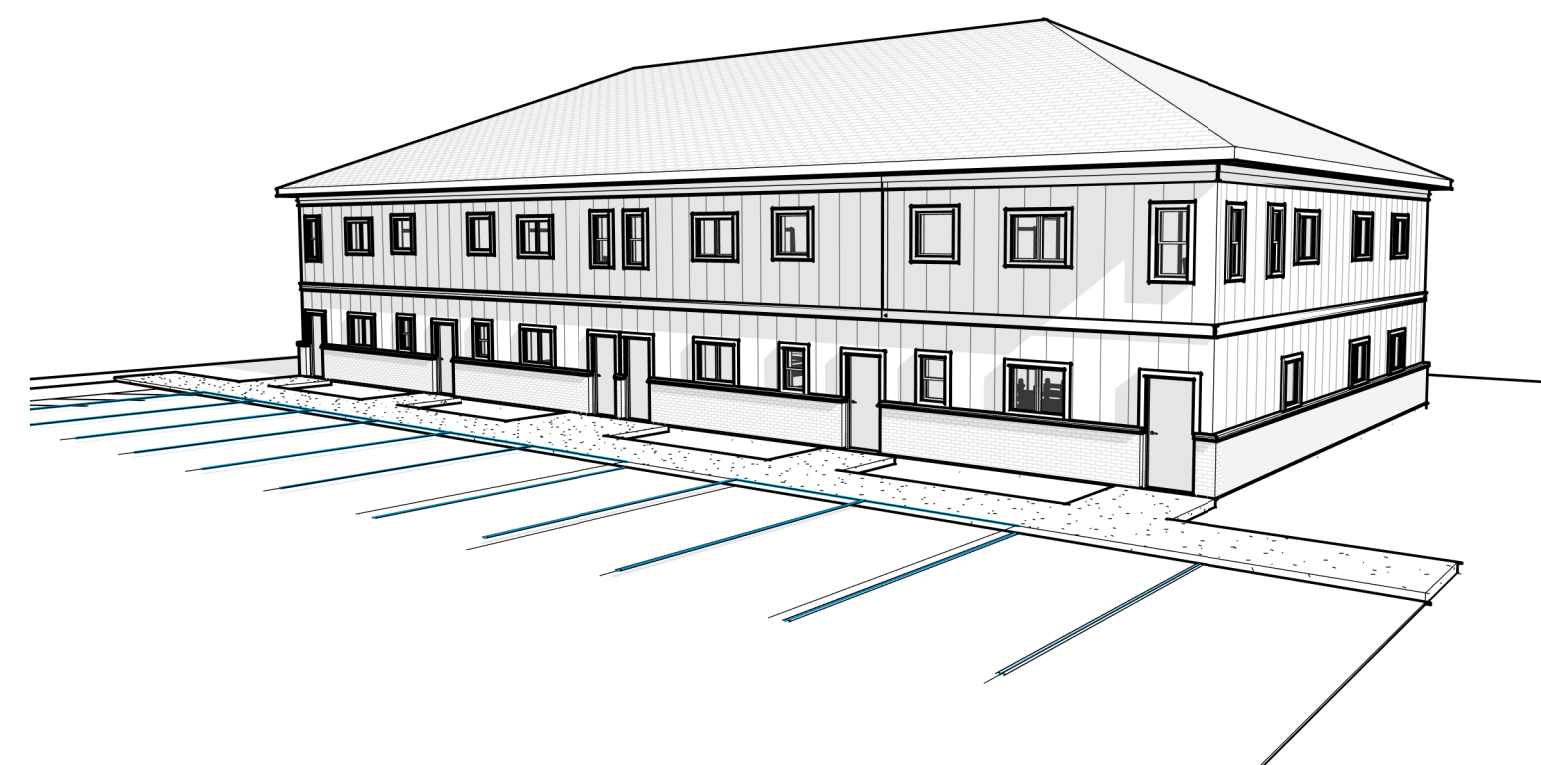
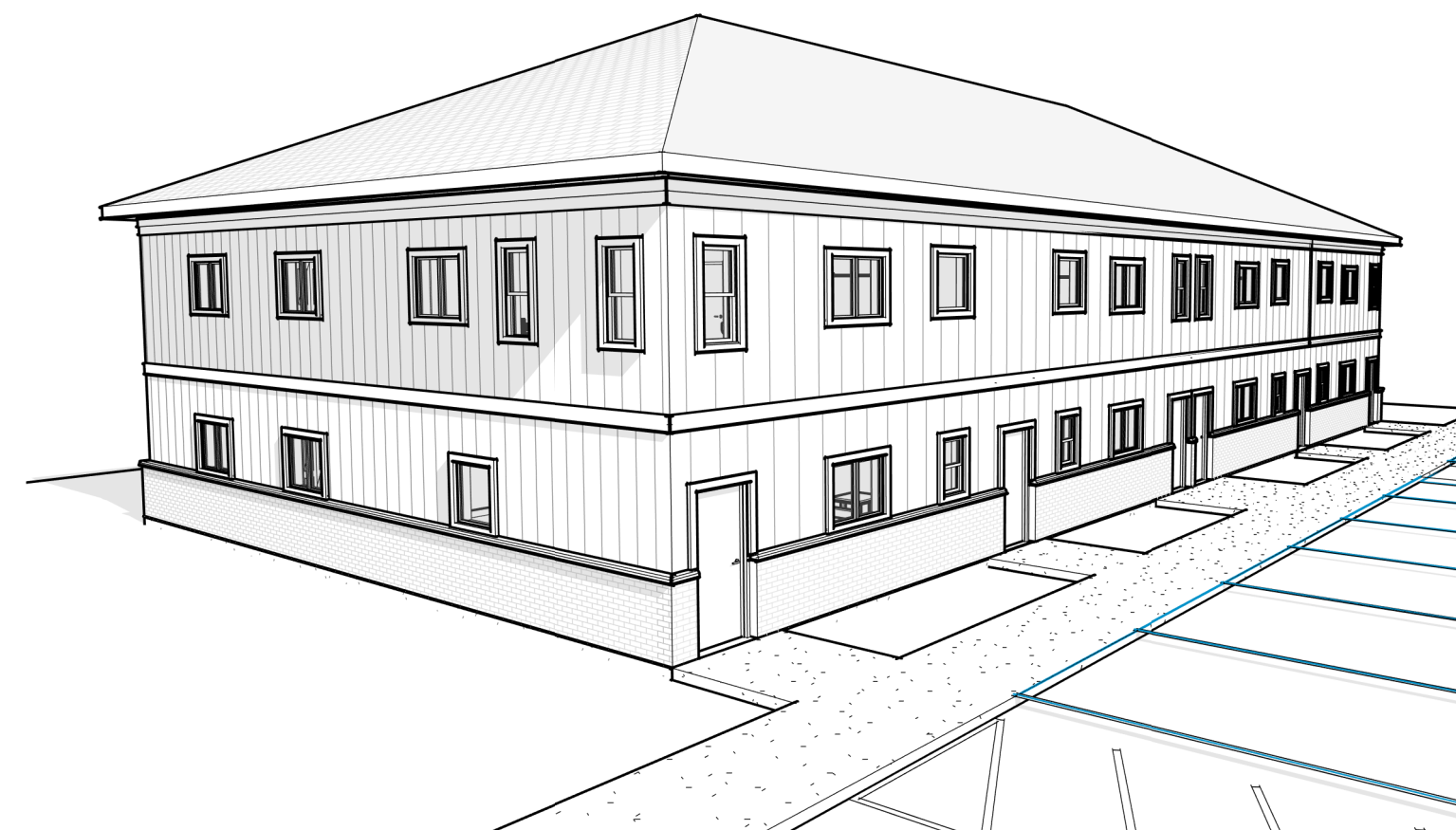


PROPOSED RESIDENTIAL BUILDING

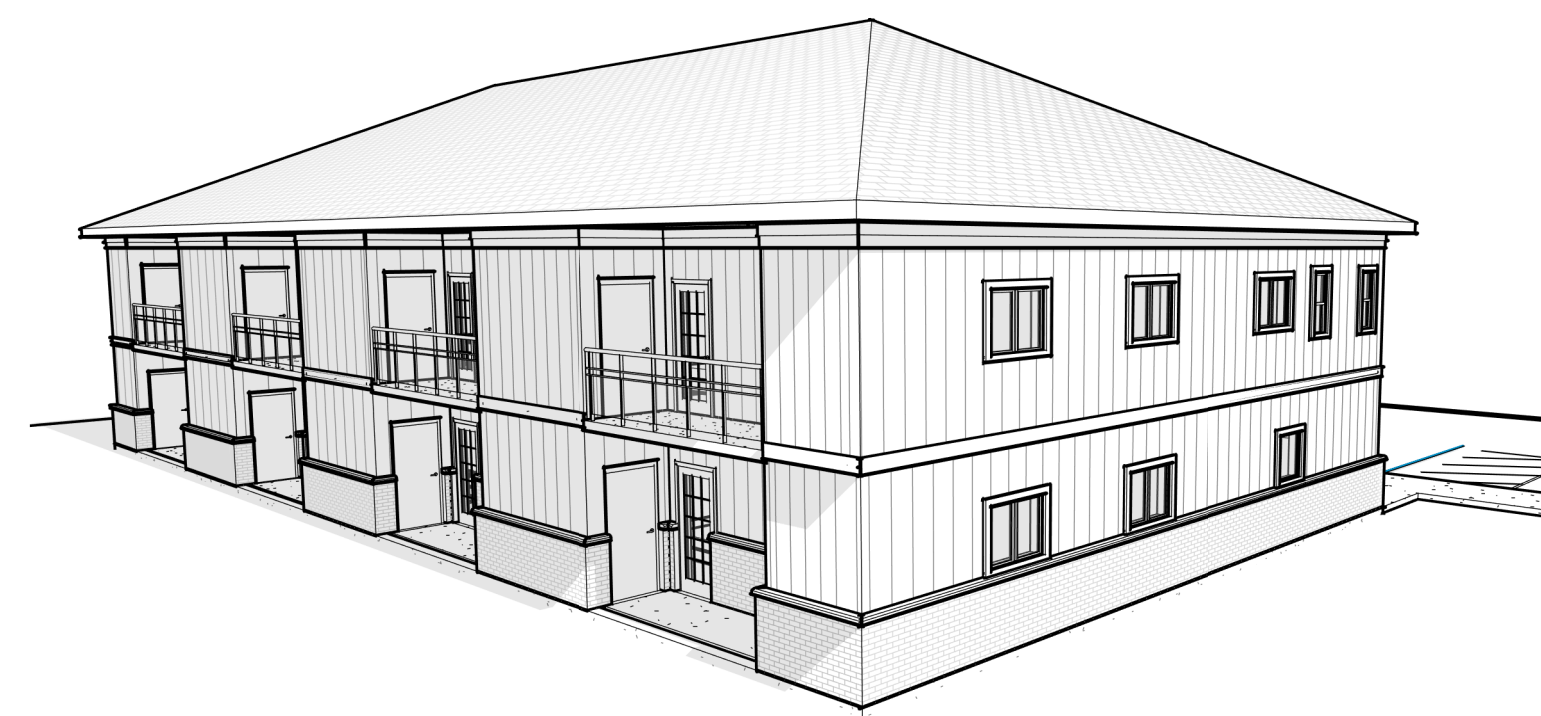
9 SCOTT DRIVE, PORT DOVER, ONTARIO
 PROJECT NUMBER: 250905



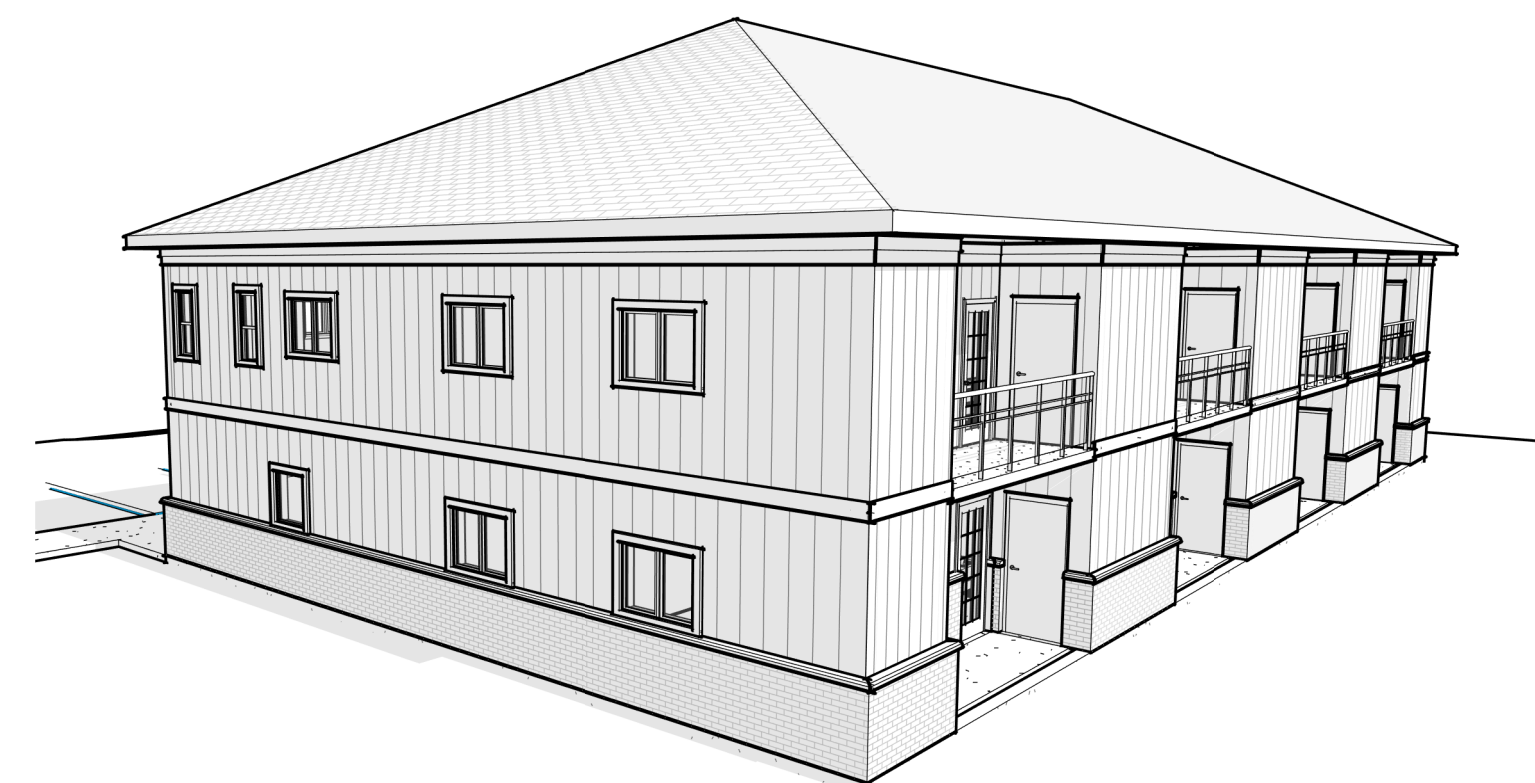
1 ISOMETRIC VIEW 1



2 ISOMETRIC VIEW 2



3 ISOMETRIC VIEW 3



4 ISOMETRIC VIEW 4

BUILDING DESIGN CONCEPT FOR CLIENT REVIEW

FOUNDATION & STRUCTURAL SYSTEM

- SHALLOW FROST-PROTECTED FOUNDATION, 4 FEET DEEP (TYPICAL), TAILORED TO LOCAL SOIL CONDITIONS
- TWO-STORY WOOD-FRAME CONSTRUCTION

UNIT CONFIGURATION & ACCESSIBILITY

- TOTAL OF 8 RESIDENTIAL UNITS:
- 4 UNITS ON THE GROUND FLOOR
- 4 UNITS ON THE SECOND FLOOR

UNIT MIX:

- 4 THREE-BEDROOM UNITS
- 4 TWO-BEDROOM UNITS

- 3 BARRIER-FREE UNITS LOCATED ON THE MAIN FLOOR (COMPLIANT WITH ONTARIO BUILDING CODE REQUIREMENTS)

MECHANICAL & HVAC SYSTEMS

- EACH UNIT EQUIPPED WITH:
- INDIVIDUAL PACKED HEATING AND COOLING UNITS
- DEDICATED HRV FOR FRESH AIR CIRCULATION
- 40-60 GALLON HOT WATER HEATER

EXTERIOR ARCHITECTURE & MATERIALS

- BASE: 40" HIGH STONE OR BRICK SKIRT
- UPPER FAÇADE: BOARD AND BATTEN SIDING FROM TOP OF MASONRY TO ROOFLINE
- DECORATIVE HORIZONTAL BOARD BANDS: ONE AT THE FLOOR LEVEL TRANSITION, ONE AT THE TOP OF THE WALL
- STONE SILL DETAIL AT TRANSITION BETWEEN MASONRY AND SIDING

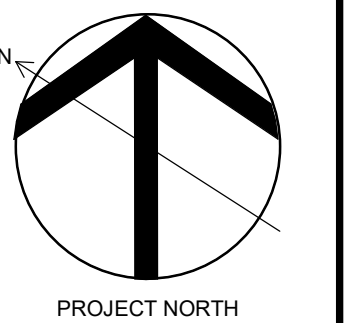
ROOF DESIGN

- GABLE ROOF WITH A 6:12 PITCH
- ASPHALT SHINGLE ROOFING SYSTEM
- TOTAL BUILDING HEIGHT: 32'-9 1/2"

OUTDOOR AMENITIES

- REAR-FACING PATIO ON MAIN FLOOR UNITS, ACCESS TO STORAGE AND MECHANICAL ROOM
- REAR-FACING BALCONIES FOR UPPER UNITS, ACCESS TO STORAGE AND MECHANICAL ROOM

REV	ISSUED FOR REVIEW DESCRIPTION	2025-09-23 DATE
0		



ANTECH
 Design & Engineering Group
 25 King St. Suite 200, Brantford, ON, N3T 3C4
 www.antechdesign.com

CLIENT:
JENNY BETTENCOURT

PROJECT:
PROPOSED RESIDENTIAL BUILDING
 9 SCOTT DRIVE, PORT DOVER, ONTARIO

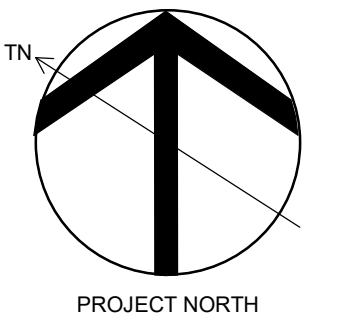
DRAWING TITLE:
COVER SHEET

DRAWN BY: J.C.	PROJECT NO. 250905	DRAWING NO. SK0.01
CHECKED BY: A.B.		

PROPRIETARY AND CONFIDENTIAL
 THE INFORMATION CONTAINED IN THIS DRAWING IS THE SOLE PROPERTY OF ANTECH DESIGN AND ENGINEERING GROUP. ANY REPRODUCTION OR DISTRIBUTION, IN PART OR AS A WHOLE, WITHOUT THE WRITTEN PERMISSION OF ANTECH DESIGN AND ENGINEERING GROUP IS PROHIBITED. THESE PLANS ARE ONLY CONSIDERED SUITABLE FOR CONSTRUCTION UPON RECEIVING ALL RELEVANT APPROVED PERMITS FROM LOCAL AUTHORITIES HAVING JURISDICTION.



REV.	DESCRIPTION	DATE



ANTECH
 Design & Engineering Group
 25 King St. Suite 200, Brantford, ON, N3T 3C4
 www.antedesign.com

CLIENT:
JENNY BETTENCOURT

PROJECT:
PROPOSED RESIDENTIAL BUILDING
 9 SCOTT DRIVE, PORT DOVER, ONTARIO

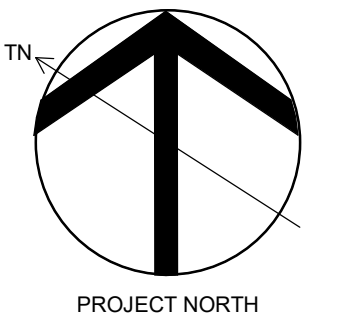
DRAWING TITLE:
MAIN FLOOR PLAN

DRAWN BY J.C.	PROJECT NO. 250905	DRAWING NO. SK1.01
CHECKED BY A.B.		

1 MAIN FLOOR - BLACK LINES
 1/4" = 1'-0"



REV.	DESCRIPTION	DATE



ANTECH
 Design & Engineering Group
 25 King St. Suite 200, Brantford, ON, N3T 3C4
 www.antedesign.com

CLIENT:
JENNY BETTENCOURT

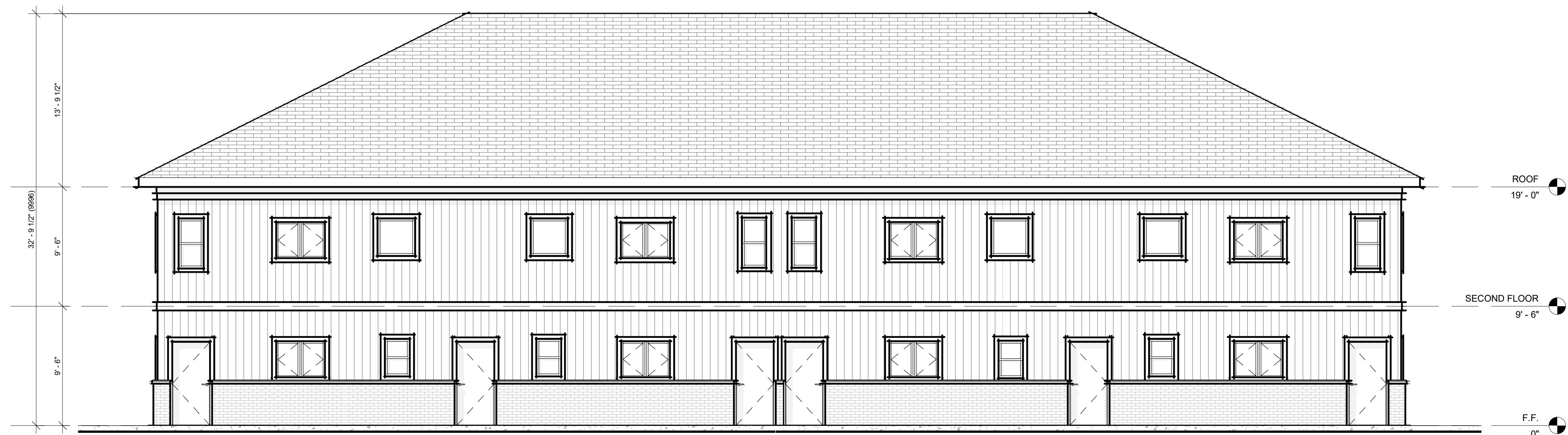
PROJECT:
PROPOSED RESIDENTIAL BUILDING
 9 SCOTT DRIVE, PORT DOVER, ONTARIO

DRAWING TITLE:
SECOND FLOOR PLAN

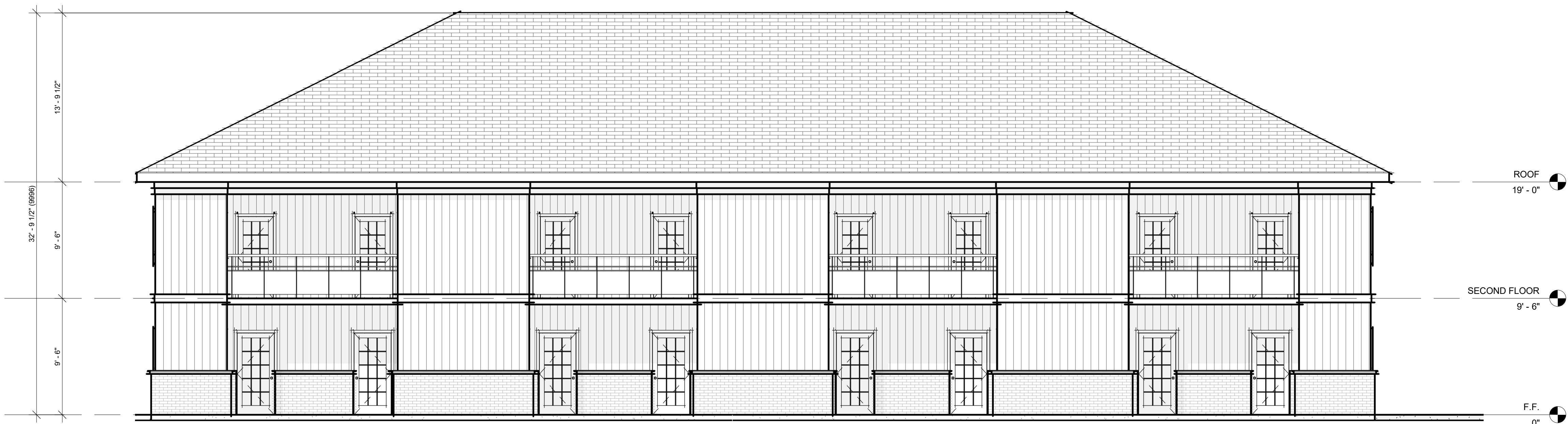
DRAWN BY: J.C.	PROJECT NO. 250905	DRAWING NO. SK1.02
CHECKED BY: A.B.		

1 SECOND FLOOR - BLACK LINES
 1/4" = 1'-0"

PROPRIETARY AND CONFIDENTIAL
 THE INFORMATION CONTAINED IN THIS DRAWING IS THE SOLE PROPERTY OF ANTECH DESIGN AND ENGINEERING GROUP. ANY REPRODUCTION OR DISTRIBUTION, IN PART OR AS A WHOLE, WITHOUT THE WRITTEN PERMISSION OF ANTECH DESIGN AND ENGINEERING GROUP IS PROHIBITED. THESE PLANS ARE ONLY CONSIDERED SUITABLE FOR CONSTRUCTION UPON RECEIVING ALL RELEVANT APPROVED PERMITS FROM LOCAL AUTHORITIES HAVING JURISDICTION.

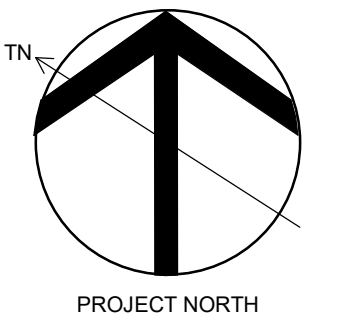


1 NORTH ELEVATION
 3/16" = 1'-0"



2 SOUTH ELEVATION
 3/16" = 1'-0"

REV.	DESCRIPTION	DATE



ANTECH
 Design & Engineering Group
 25 King St. Suite 200, Brantford, ON, N3T 3C4
 www.antedesign.com

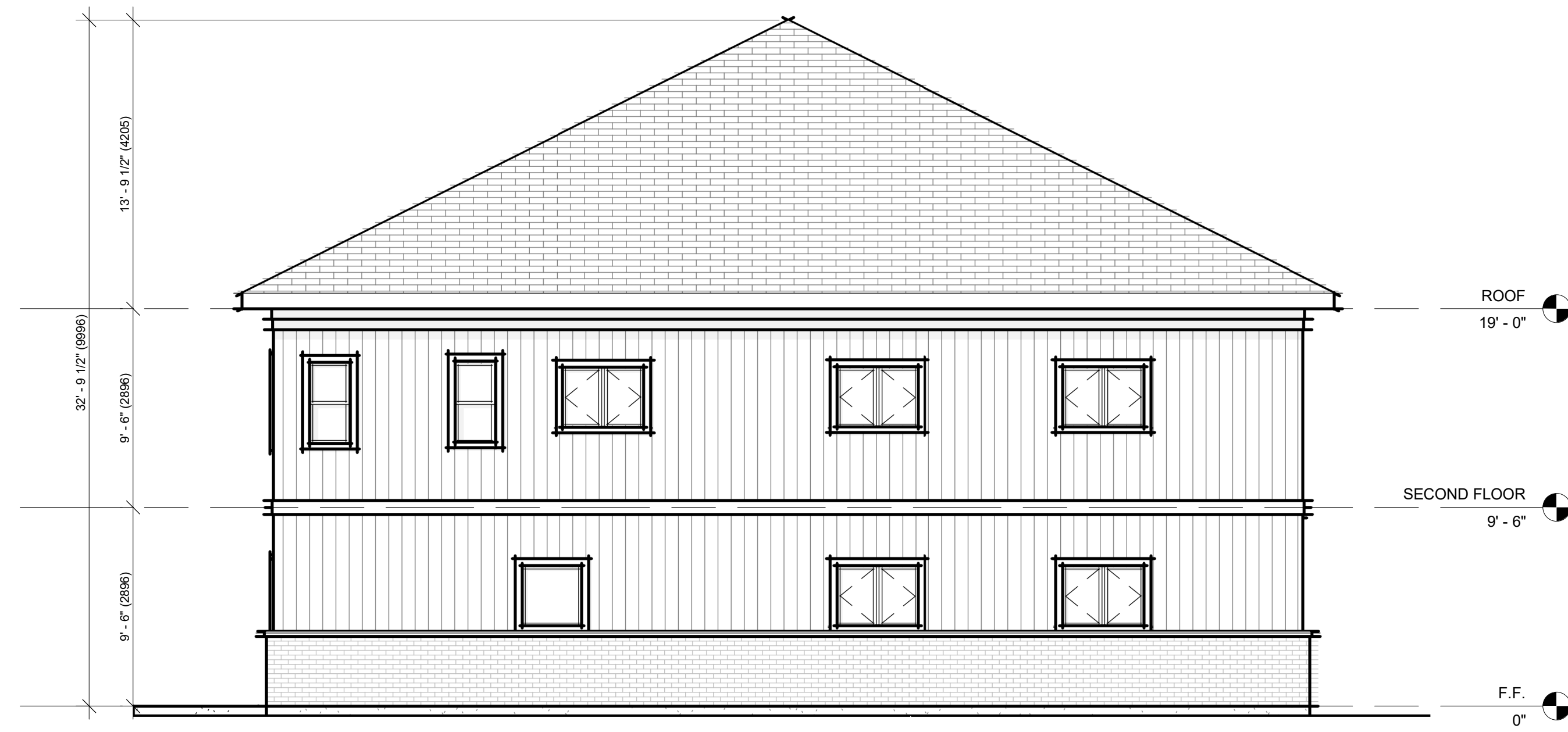
CLIENT:
JENNY BETTENCOURT

PROJECT:
PROPOSED RESIDENTIAL BUILDING
 9 SCOTT DRIVE, PORT DOVER, ONTARIO

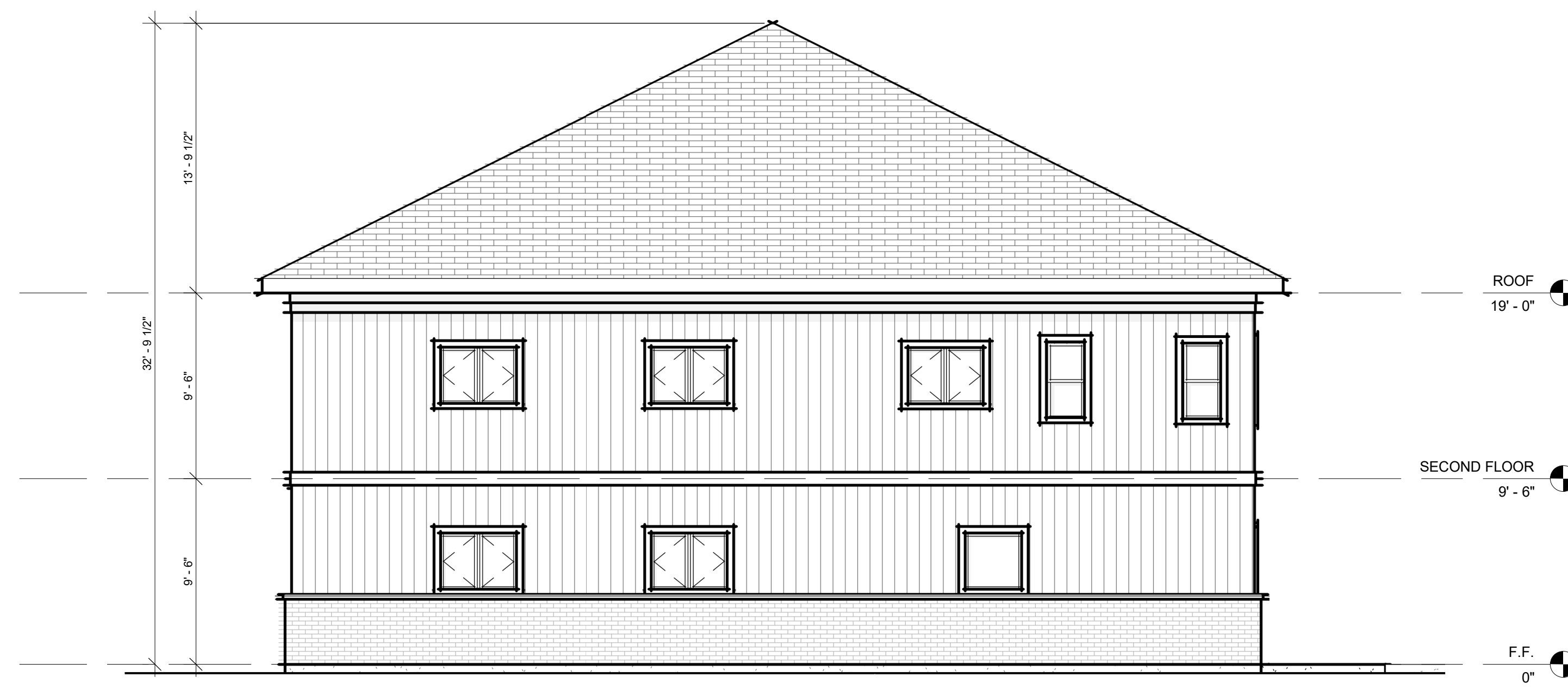
DRAWING TITLE:
ELEVATIONS

DRAWN BY J.C.	PROJECT NO. 250905	DRAWING NO. SK2.01
CHECKED BY A.B.		

PROPRIETARY AND CONFIDENTIAL
 THE INFORMATION CONTAINED IN THIS DRAWING IS THE SOLE PROPERTY OF ANTECH DESIGN AND ENGINEERING GROUP. ANY REPRODUCTION OR DISTRIBUTION, IN PART OR AS A WHOLE, WITHOUT THE WRITTEN PERMISSION OF ANTECH DESIGN AND ENGINEERING GROUP IS PROHIBITED. THESE PLANS ARE ONLY CONSIDERED SUITABLE FOR CONSTRUCTION UPON RECEIVING ALL RELEVANT APPROVED PERMITS FROM LOCAL AUTHORITIES HAVING JURISDICTION.

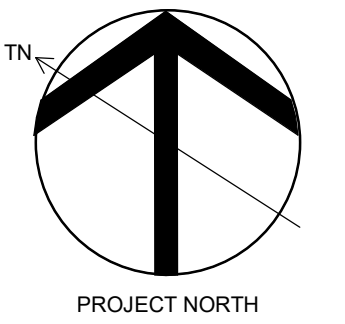


1 WEST ELEVATION
 3/16" = 1'-0"



2 EAST ELEVATION
 3/16" = 1'-0"

REV.	DESCRIPTION	DATE



ANTECH
 Design & Engineering Group
 25 King St. Suite 200, Brantford, ON, N3T 3C4
 www.antechdesign.com

CLIENT:
JENNY BETTENCOURT

PROJECT:
PROPOSED RESIDENTIAL BUILDING
 9 SCOTT DRIVE, PORT DOVER, ONTARIO

DRAWING TITLE:
ELEVATIONS

DRAWN BY J.C.	PROJECT NO. 250905	DRAWING NO. SK2.02
CHECKED BY A.B.		