

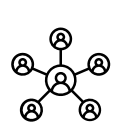


SCOR EDC MEMBER UPDATE

Norfolk County 2025

SCOR EDC: History

Created in 2010



Formed by member counties to tackle big regional challenges together



Diversify economies and build long-term prosperity



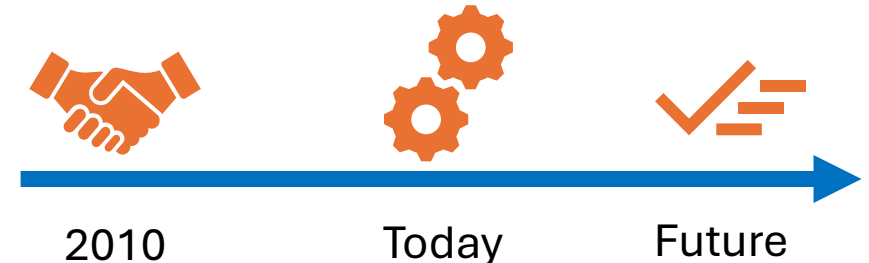
Shared resources = smarter use of taxpayer dollars



One strong voice for advocacy and funding leverage



Connected communities: Jobs, commerce, education, supply chains and services across municipal boundaries



SCOR EDC: Structure



Ed Ketchabaw
Chair



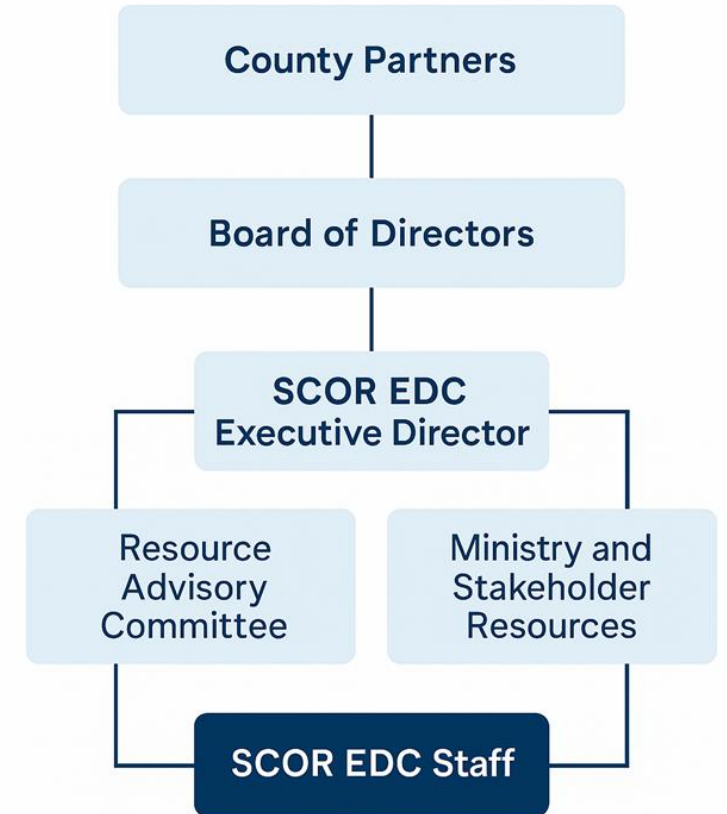
Jennifer Kyle
Vice Chair



Amy Martin
Norfolk County



Chris Van Paassen
Norfolk County



SCOR EDC: Regional Strategy



1. Infrastructure supporting economic development
2. Human capital supporting economic development
3. Sector development: agriculture & agri-food

SCOR EDC: Regional Strategy



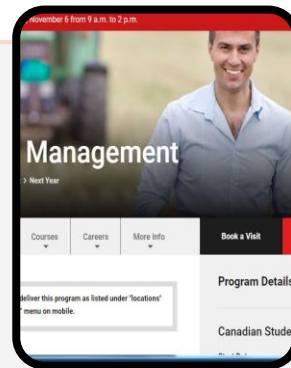
Norfolk Strategic Priorities	Infrastructure	Human Capital	Sector Development	Advocacy
Empowering Norfolk				
Foster and build partnerships with the community		√		√
Create a place where businesses and residents can thrive				
Advocate for the needs of Norfolk				√
Building Norfolk				
Ensure the health, safety and wellbeing of the community	√	√		
Provide a solid infrastructure foundation	√			
Ensure responsible growth policies and strategies	√		√	√
Connecting Norfolk				
Celebrate and connect all of our communities	√	√		√
Maximize our mobility options	√	√		√
Ensure Norfolk is virtually connected to the world				√
Serving Norfolk				
Strengthen communication and service delivery				
Foster a positive employee culture				
Create an environment of continuous improvement				
Sustaining Norfolk				
Protect and strengthen our agricultural and natural heritage	√	√	√	√
Continue to implement and enhance our climate action strategies				√
Ensure fiscal sustainability	√	√	√	√

SCOR EDC: Regional Strategy



Economic Development Strategy	Infrastructure	Human Capital	Sector Development	Advocacy
Goal 1: Support & Retain--Development and implement BR & E				
Pursue advocacy and funding opportunities with all levels of government	√	√	√	√
Work with partner to attract more visitors for tourism recreation and culture		√		√
Goal 2: Attract--New business investment and job creation				
Support and expand creative industries to benefit local economy		√		√
Promote and support awareness of sustainable practices such as precision agriculture regenerative farming etc			√	√
Explore partnership with neighbouring municipalities to develop a strategy for an innovative food hub/seasonal Food terminal and attracting value added food processing	√	√	√	√
Explore industrial lands for investment			√	√
Goal 3: Grow--Talent attraction and workforce development				
Collaborate with partners to attract entrepreneurs, students, newcomers and temporary workers, promoting opportunities for skilled labour and agricultural careers		√	√	√
Investigate collaborative and innovative strategies for housing and transportation	√	√		√
Encourage the development of training and educational programs that meet the needs of the local economy		√	√	√
Goal 4: Connect--Branding communications and marketing tools				
Build the economic development community brand to maintain a brand ownership position for both internal and external audiences				√
Promote unique value proposition and/or comparative advantage of Norfolk		√	√	√
Develop the capacity and tools to deliver Norfolk's economic development programs and services	√	√	√	√

SCOR EDC: Successes



Intercommunity transit
 9 systems
 21,000 km sq
 2 million population
 375,000 over age of 65
 200,000 low income
 213% increase in ridership

Freight rail supporting agriculture and manufacturing sectors
 Directly supporting businesses along with \$7,000,000 impact
 Connecting region to wider supply chains

Support and development of natural gas supporting rural Ontario and agriculture and manufacturing sectors

Collaboration with Workforce Planning Boards creation of Human Resources Business Toolkit for SME's

Agri-Business Management
 Agricultural Equipment Operator
 Collaboration in creation of agricultural specific college training programs

Collaboration with OFA in creation of sector specific training tools for agriculture
 Feeding Your Future
 Focus on Food Always in Season

Collaboration with Rural Ontario Institute in supporting rural housing development tools

Political Engagement & Influence



- Ministerial Access: Meet with 7 ministers annually at recent AMO
- Ongoing Dialogue: Continue conversations beyond conferences to build networks and relationships
- Inclusive Delegations: All members invited to participate and contribute
- Recent Highlight: Invited to meet Minister Fedeli in Niagara Region encouraged to apply for funding



SCOR EDC: Importance

Why the Model Works

- Regional challenges require collaboration; SCOR EDC is the mechanism
- Protects shared economies where jobs, education, and services cross municipal boundaries
- Right-sized for impact: big enough to get attention and test ideas and initiatives; small enough for consensus and speed
- Keeps counties competitive for investment and growth
- SCOR EDC amplifies local voices with other levels of government
- Mechanism for rapid response to emerging opportunities and challenges.
- Keeps counties competitive for funding and investment

SCOR EDC: Impact



Financial Impact : Last 3 years

SCOR Financial Impact Assessment 2022-2025	
Direct	
Staffing Supports	\$70,500.00
Projects & Promotions	\$186,500.00
Total SCOR EDC	\$257,000.00
Partner supported funding attracted	
Workforce Projects	\$830,000.00
Rural Ontario Institute - RHIS	\$665,000.00
Transit Projects	\$62,000.00
Agricultural Project - Market Development	\$85,000.00
Total Regional	\$1,642,000.00
Regional Infrastructure Impact on Business	
Direct	
Rail	23,458,000.00
Energy	18,000,000.00
Transportation	748,580.00
	42,206,580.00
Programming Resulting from Advocacy Efforts	
Transportation Programming (CTPG)	7,963,954.00
Total Influenced	\$7,963,954.00
Total =	\$52,069,534.00

Financial Impact : Including SPCDF & OTIF

Broader Influence for Programming (Direct & Indirect)	
Rural Transit Solutions Fund \$250 Million	\$250,000,000
OTIF	\$20,000,000
	\$270,000,000.00
Sand Plains Community Development Fund- still paying divide	\$15,000,000
Total	\$285,000,000.00
Total Value	\$337,069,534.00

Financial Impact : Staffing

Your membership fee	Comparative Costs
\$30,000	\$130,000 Senior staff person
	\$60,000 part time staff
8 Neighboring Elected Officials	\$800,000 Access to senior staff expertise
	Experience and goodwill = invaluable
\$30,000 = \$900,000 value for Membership	



SCOR EDC: Future

Projects & Initiatives

- Continue supporting infrastructure that strengthens our region's supply chain and investment attractiveness (Freight rail, affordable energy, transportation).
- Support economic and social mobility.
- Interprovincial agri-food trade corridors developed.
- Supply chain and regional and interprovincial connections created for long term resilience



SCOR EDC: The Ask

- Continued regional collaboration through membership fee of \$30,000
- Continue investing in shared regional resources through SCOR EDC
- Recognize proven successes and SCOR EDC's role in tackling current and future challenges
- Your investment ensures regional leverage and local impact

Modest member contribution secures millions in regional value ...past, present, and future.



Thank You!



We have accomplished a great deal as a regional partnership...good neighbours working together for the good of all!

Thank you!

Ed Ketchabaw SCOR EDC Chair of the Board of Directors

eketchabaw@ELGIN.ca

Jennifer Kyle SCOR EDC Vice Chair of the Board of Directors

jennifer.kyle@brant.ca

Kimberly Earls Executive Director SCOR EDC

Kimberly.earls@scorregion.com